

Omada Gigabit VPN Router

MODEL: ER605 V2



Highlights

- 1 Gigabit WAN port, 2 Gigabit LAN ports, 2 Gigabit WAN/LAN ports and 1 USB port (support USB LTE dongle) provide high-speed wired connectivity
- Supports multiple VPN protocols, including IPSec, L2TP, PPTP and OpenVPN. Up to 20 IPSec VPN tunnels, 16 L2TP VPN tunnels, 16 PPTP VPN tunnels, and 16 OpenVPN tunnels are simultaneously supported
- SPI firewall and DoS defense protect your network from most known Internet attacks
- Professional 4 KV lightning protection keeps your investment safe and sound

Omada Solution



Hospitality

High Quality and Full Coverage Wi-Fi



Education

High-Density Wi-Fi



Retail

Social Marketing for O2O



Office

Wireless and Wired Connections

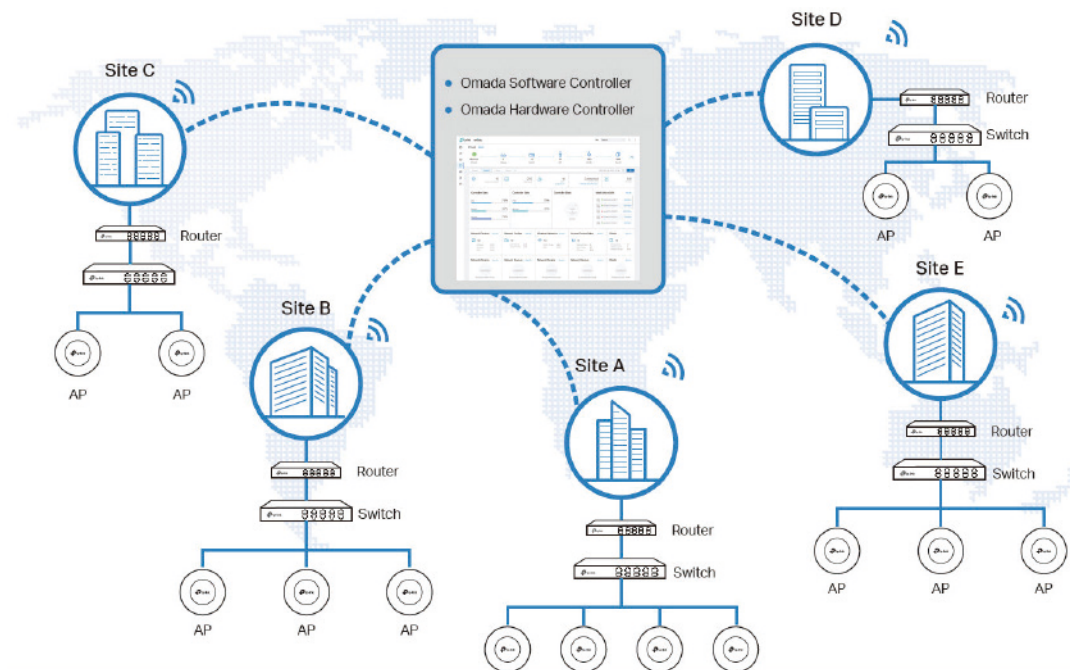


Catering

Full Wi-Fi Coverage in High-Density Environment

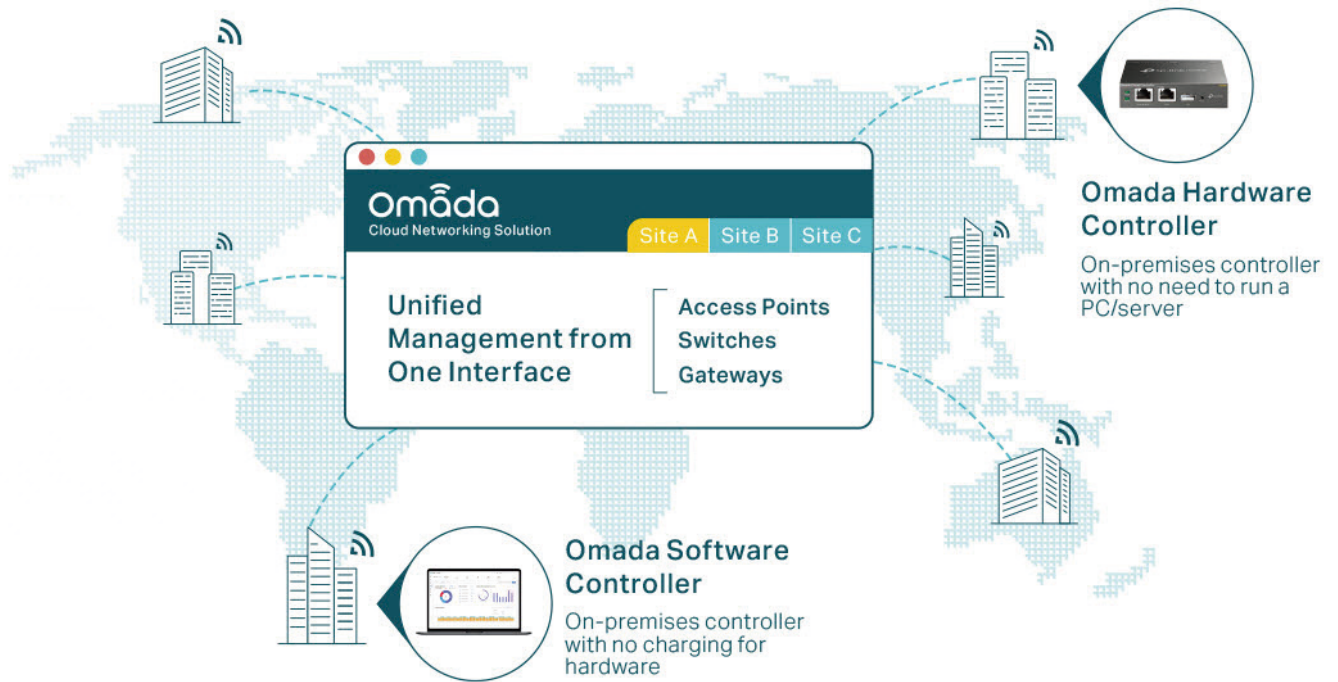
Software Defined Networking (SDN) with Cloud Access

Omada Software Defined Networking (SDN) platform integrates network devices, including access points, switches and gateways, providing 100% centralized cloud management. Omada creates a highly scalable network—all controlled from a single interface. Seamless wireless and wired connections are provided, ideal for use in hospitality, education, retail, offices, and more.



Hassle-Free Centralized Cloud Management

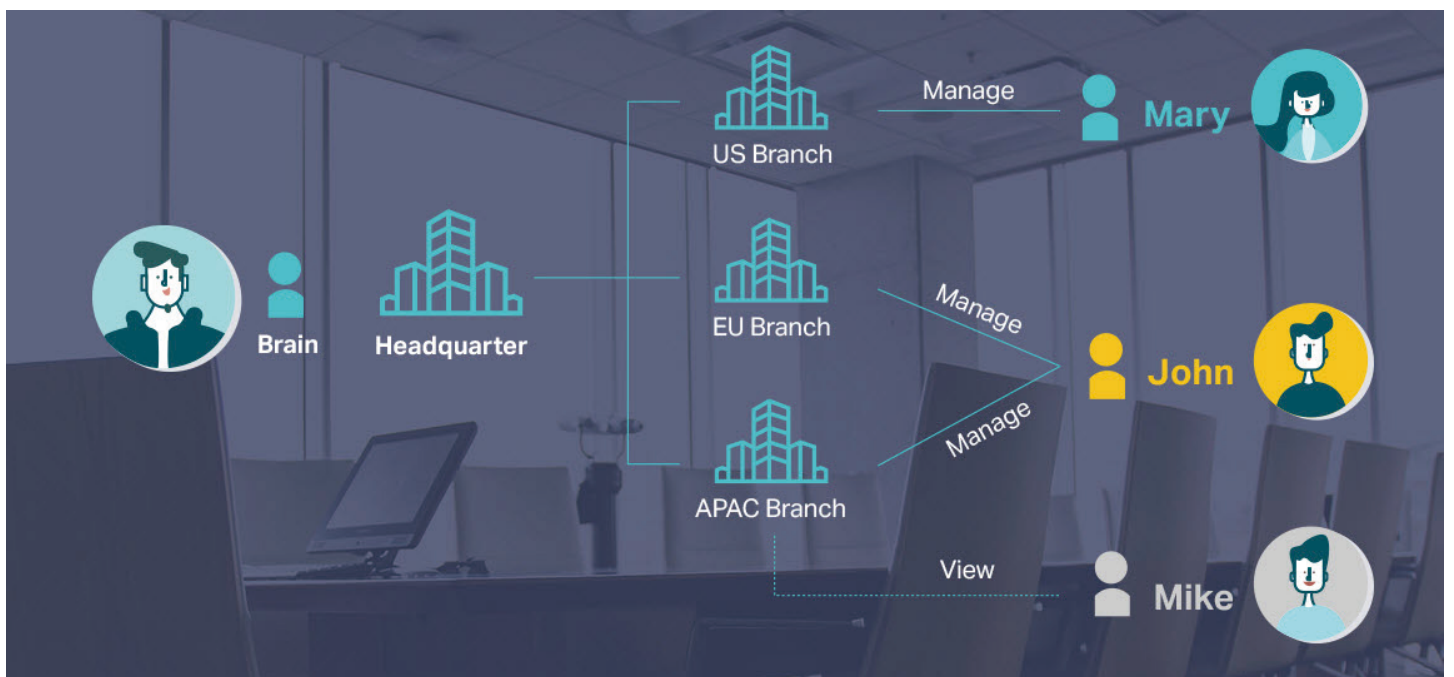
100% centralized cloud management of the whole network from different sites—all controlled from a single interface anywhere, anytime.



- ✓ No additional training needed
- ✓ Unlimited scalability
- ✓ Batch management
- ✓ Devices still work even when not connected to the Cloud

Assign Different Management Roles

Multi-user privilege assignment is available to increase management efficiency and security. Multi-person management, multi-level permissions, and the ability to add admins as needed, enable flexible network operation and maintenance.

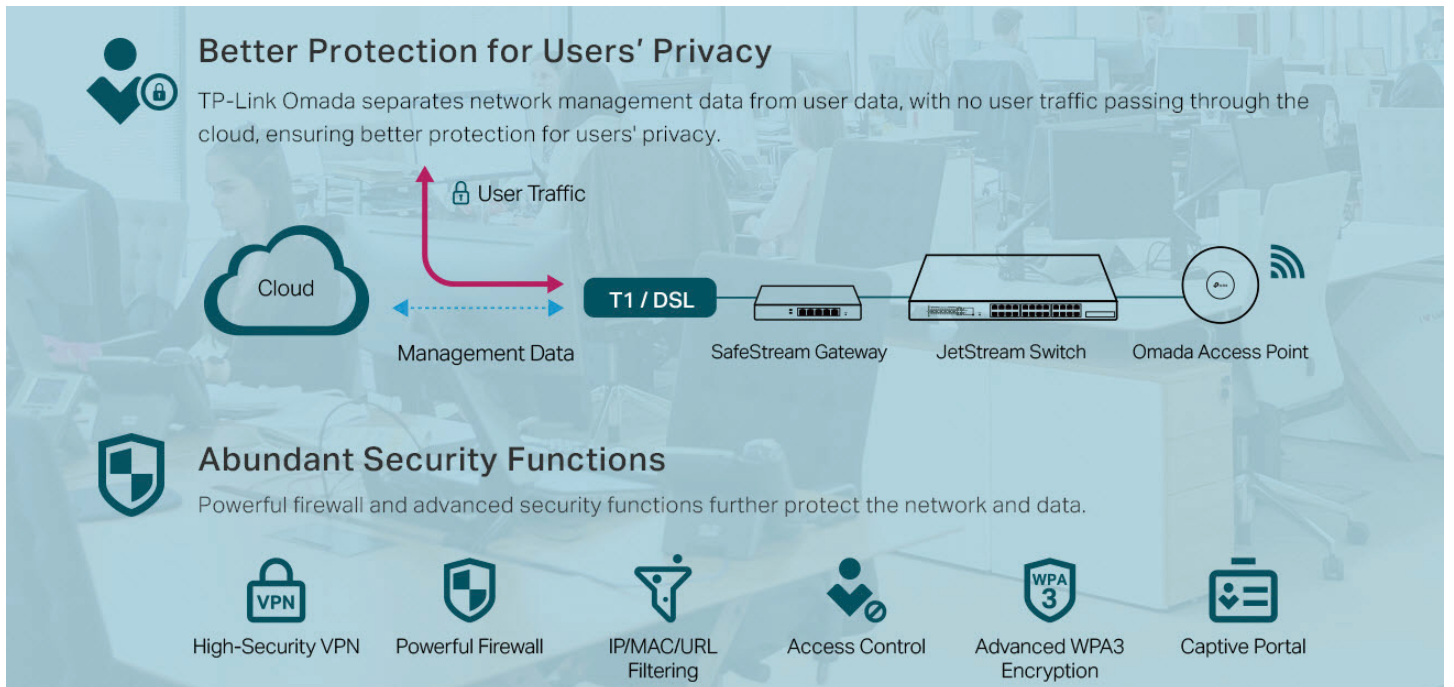


Easy and Intelligent Network Monitoring

The easy-to-use dashboard makes it easy to see your real-time network status; check network usage and traffic distribution; receive network condition logs, abnormal event warnings, and notifications; or even track key data for better business results. Network topology helps IP admins quickly see and troubleshoot connection at a glance.



Comprehensive Protection for the Whole Network



Product Features

High-security VPN Capabilities

ER605 supports multiple VPN protocols (IPSec, L2TP, PPTP, and OpenVPN) and can handle IPSec/PPTP/L2TP/OpenVPN pass-through traffic as well. It also features a built-in hardware-based VPN engine allowing the router to support and manage up to 20 LAN-to-LAN IPSec, 16 L2TP, 16 PPTP, and 16 OpenVPN connections. Advanced VPN features include: DES/3DES/AES128/AES192/AES256 encryption, MD5/SHA1 authentication, Manual/IKE v1/v2 key management, and Main/Aggressive negotiation modes.

Abundant Security Features

For defense against external threats, ER605 features SPI Firewall function. Additionally, it can automatically detect and block Denial of service (DoS) attacks such as TCP/UDP/ICMP Flooding, Ping of Death and other related threats. Moreover, this router provides IP/MAC/Domain name filtering functions, which forcefully prevent attacks from intruders and viruses. For applications such as FTP, TFTP, H.323 and RTSP which are not well compatible with NAT, ER605 offers administrators one-click enable of ALG choices corresponding to the above four mentioned applications.

Safety Minded Enterprise Investments

Professional lightning protection technology is designed to prevent electrical surges from penetrating the interior of the electrical equipment and is discharged harmlessly into the Earth. This router is designed to prevent lightning up to 4 KV in well-grounded connection conditions. This feature ensures that networking infrastructure investments remain as safe as possible from one of mother nature's more violent situations.

Specifications

Model		ER605 V2
Product Picture		
Product Description		Omada Gigabit VPN Router
Hardware	Standards and Protocols	IEEE 802.3, IEEE802.3u, IEEE802.3ab, IEEE 802.3x, IEEE 802.1q TCP/IP, DHCP, ICMP, NAT, PPPoE, NTP, HTTP, HTTPS, DNS, IPSec, PPTP, L2TP, OpenVPN, SNMP
	Interface	1 Gigabit WAN port 2 Gigabit LAN/WAN ports 2 Gigabit LAN ports
	USB	Support USB LTE dongle ¹
	Network Media	10BASE-T: UTP category 3, 4, 5 cable (Max 100 m) EIA/TIA-568 100Ω STP (Max 100 m) 100BASE-TX: UTP category 5, 5e cable (Max 100 m) EIA/TIA-568 100Ω STP (Max 100 m) 1000BASE-T: UTP category 5e, 6 cable (Max 100 m)
	Button	Reset Button
	Power Supply	External 12 V/1 A DC Adapter
	Flash	128 MB NAND
	DRAM	256 MB DDR
	LED	PWR, SYS, WAN (Link/Act), LAN (Link/Act), USB
	Power Consumption (max.)	7.94 W
	Dimensions (W x D x H)	6.2 × 4.0 × 1.0 in (158 × 101 × 25 mm)
SDN Support	Hardware Controller (OC200/OC300)	Automatic Device Discovery Intelligent Network Monitoring Abnormal Event Warnings
	Software Controller	Unified Configuration Reboot Schedule Captive Portal Configuration
Performance	Concurrent Session	150,000
	New Sessions /Second	2,600
	Static IP NAT Throughput	Upload: 945.77 Mbps; Download: 945.56 Mbps Bi-Directional: 1808.29 Mbps
	DHCP NAT Throughput	Upload: 945.93 Mbps; Download: 945.43 Mbps Bi-Directional: 1808.11 Mbps
	PPPoE NAT Throughput	Upload: 940.44Mbps; Download: 940.52 Mbps Bi-Directional: 1804.27 Mbps
	L2TP NAT Throughput	Upload: 845.64 Mbps; Download: 802.65 Mbps Bi-Directional: 931.96 Mbps
	PPTP NAT Throughput	Upload: 771.66 Mbps; Download: 874.81 Mbps Bi-Directional: 999.54 Mbps
	64 Byte Packet forwarding rate	Upload/Download: 1,402,238 pps Bi-Directional: 1,681,548 pps
	IPSec VPN Throughput	ESP-MD5-AES256: 171.26 Mbps ESP-SHA1-AES256: 224.86 Mbps ESP-SHA2-AES256: 248.04 Mbps
	OpenVPN	21.70 Mbps

Model		ER605 V2
Performance	L2TP VPN Throughput	Unencrypted: 864.65 Mbps Encrypted: 47.11 Mbps
	PPTP VPN Throughput	Unencrypted: 703.20 Mbps Encrypted: 76.65 Mbps
Basic Functions	WAN Connection Type	Static IP Dynamic IP PPPoE PPTP L2TP
	DHCP	DHCP Server DHCP Address Reservation Multi-IP Interfaces Multi-Net DHCP
	MAC Clone	Modify WAN/LAN MAC Address ²
	IPTV	IGMP v2/v3 Proxy, Custom Mode, Bridge Mode
	IPv6	StaticIP / SLAAC / DHCPv6 / PPPoE / 6to4Tunnel / PassThrough
	VLAN	802.1Q VLAN
	Transmission	Load Balance
NAT		One-to-One NAT ³ Multi-Net NAT Virtual Server Port Triggering ³ NAT-DMZ FTP/H.323/SIP/IPSec/PPTP ALG, UPnP
Routing		Static Routing Policy Routing
Session Limit		IP-based Session Limit
Bandwidth Control		IP-based Bandwidth Control
VPN	IPSec VPN	20 IPSec VPN Tunnels LAN-to-LAN, Client-to-LAN Main, Aggressive Negotiation Mode DES, 3DES, AES128, AES192, AES256 Encryption Algorithm IKE v1/v2 MD5, SHA1 Authentication Algorithm, SHA2 Authentication Algorithm NAT Traversal (NAT-T) Dead Peer Detection (DPD) Perfect Forward Secrecy (PFS)
	PPTP VPN	PPTP VPN Server PPTP VPN Client (10) ⁴ 16 Tunnels PPTP with MPPE Encryption

1. For compatibility list, visit <https://www.tp-link.com/er605/compatibility/>
2. LAN MAC Address can be modified only in Standalone Mode.
3. One-to-One NAT and Port Triggering are only supported only in Standalone Mode.
4. ER605 can work as a VPN client and can connect with up to 10 VPN servers.

Model		ER605 V2
VPN	L2TP VPN	L2TP VPN Server L2TP VPN Client (10) ¹ 16 Tunnels L2TP over IPSec
	OpenVPN	OpenVPN Server OpenVPN Client (10) ¹ 16 OpenVPN Tunnels
Security	Attack Defense	TCP/UDP/ICMP Flood Defense Block TCP Scan (Stealth FIN/Xmas/Null) Block Ping from WAN
	Filtering	Web Group Filtering ² URL Filtering Web Security ²
	ARP Inspection ³	Sending GARP Packets ARP Scanning IP-MAC Binding
	Access Control	Source/Destination IP Based Access Control
Authentication	Web Authentication	No Authentication Simple Password ⁴ Hotspot (Local User / Voucher ⁴ / SMS ⁴ / Radius ⁴) External Radius Sever External Portal Sever ⁴ Facebook ⁴
Management	Service	Dynamic DNS (Dyndns, No-IP, Peanuthull, Comexe)
	Maintenance	Web Management Interface Remote Management Export & Import Configuration SNMP v1/v2c/v3 Diagnostics (Ping & Traceroute) ⁵ NTP Synchronize ⁵ Syslog Support
Others	Certification	CE, FCC, RoHS
	Package Contents	ER605, Power Adapter, RJ-45 Ethernet Cable, Quick Installation Guide
	System Requirements	Microsoft Windows 98SE, NT, 2000, XP, Vista™ or Windows 7/8/8.1/10 MAC OS, NetWare, UNIX or Linux
	Environment	Operating Temperature: 0 °C to 40 °C (32 °F to 104 °F) Storage Temperature: -40 °C to 70 °C (-40 °F to 158 °F) Operating Humidity: 10% to 90% non-condensing Storage Humidity: 5% to 90% non-condensing

- ER605 can work as a VPN client and can connect with up to 10 VPN servers.
- Web Group Filtering and Web Security are only supported only in Standalone Mode.
- ARP Inspection is supported only in Standalone Mode.
- The following web authentication methods are supported only in Controller Mode: Simple Password, Voucher, SMS, Radius, External Portal Sever, and Facebook.
- Diagnostics (Ping & Traceroute) and NTP Synchronize are supported only in Standalone Mode.

* Some models featured in this guide may be unavailable in your country or region. Visit TP-Link website for local sales information: www.tp-link.com.

* Specifications are subject to change without notice. All brands and product names are trademarks or registered trademarks of their respective holders. © 2022 TP-Link