



AC750 Dual Band Wi-Fi 4G LTE Router

Share Your 4G LTE Network

Archer MR200



4G(TDD&FDD)/3G
Compatible



300 Mbps + 433 Mbps
Dual Band Wi-Fi*

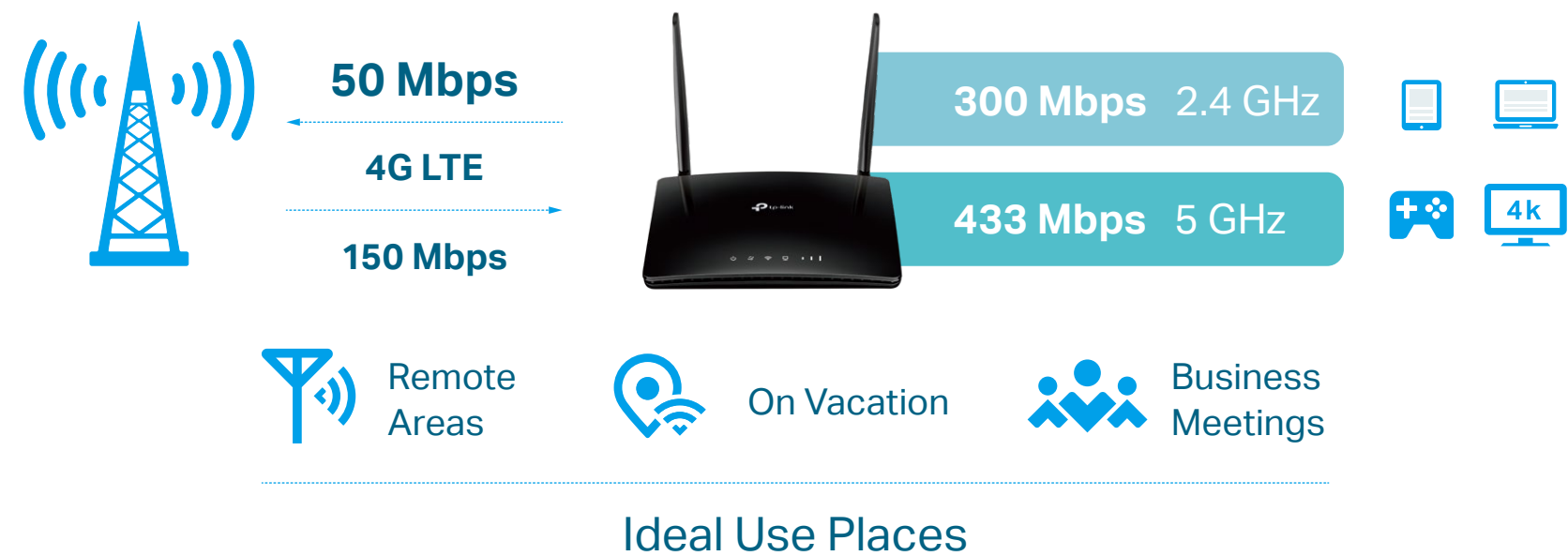


Detachable LTE Antennas
for Better Performance

Highlights

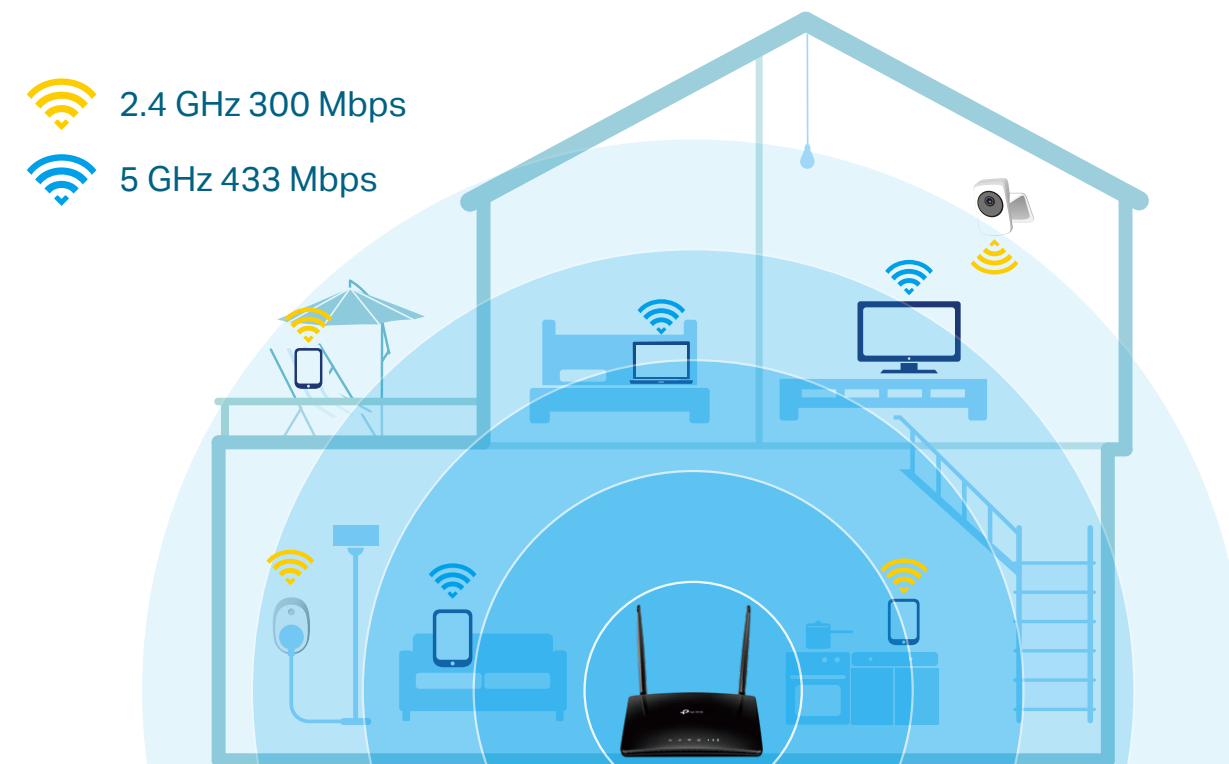
Superfast 4G LTE Speed & Stream-Ready AC Wi-Fi

The Archer MR200 uses 4G LTE technology to achieve speeds of up to 150 Mbps download and 50 Mbps upload. It also shares a simultaneous dual band Wi-Fi network with maximum speeds of 300 Mbps on 2.4 GHz and 433 Mbps on 5 GHz for gaming, streaming and more.†



Design for Maximum Network Coverage

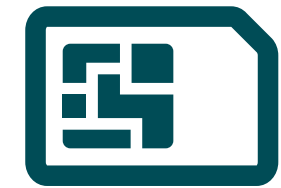
Advanced LTE antennas make efficient and stable connections to every device. Power Amplifier and Low Noise Amplifier boost sending and receiving capabilities, creating a wide-coverage Wi-Fi network for your home.



Highlights

Plug and Play

Simply insert your 3G/4G nano SIM card into the built-in slot, turn on the MR200 and start surfing!



SIM Card

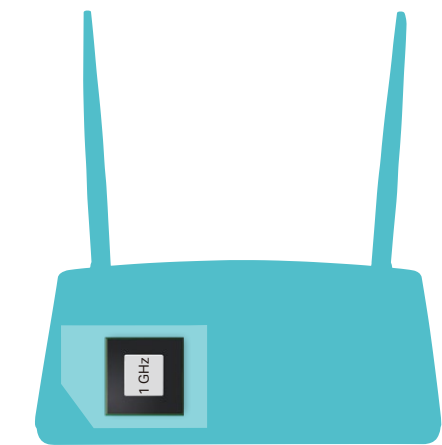


Start Surfing!

More Devices, More Stability

Connect up to 64 wireless devices with ease, thanks to a powerful Qualcomm processor that boosts data transfer speeds while ensuring dependable network stability.†

**Up to
64
Devices**



Qualcomm CPU

Highlights

Support TP-Link OneMesh™

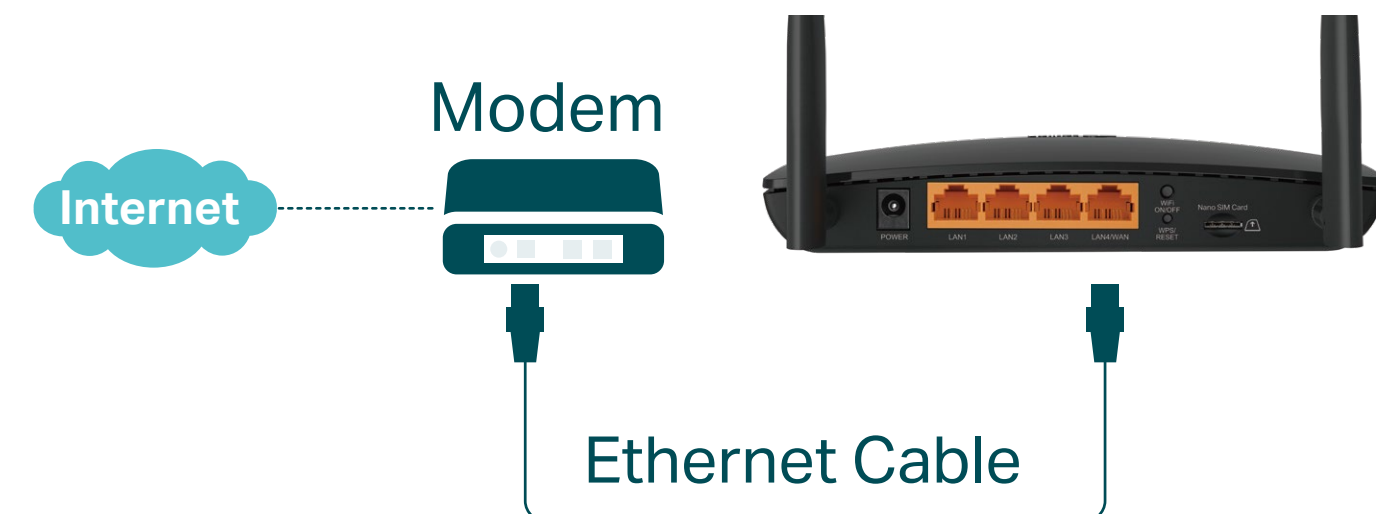
Co-work with TP-Link OneMesh products, to provide a more flexible and cost-effective Mesh network with a single Wi-Fi name for seamless whole-home coverage.

*OneMesh Range Extender or Powerline Adapter sold separately.

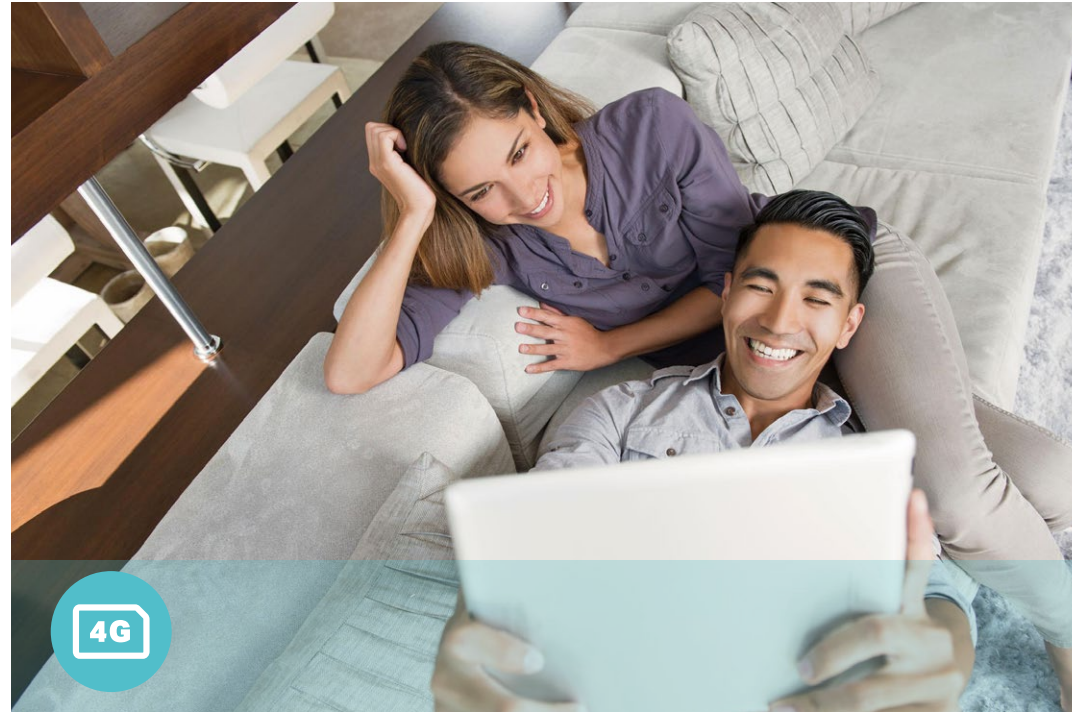


Available WAN Connection

The WAN/LAN port enables MR200 to work as a traditional wireless router which is compatible with cable, fiber, and DSL modems. And when it's set as a wireless router, its 3G/4G connection works as a backup to provide a sustained and reliable internet connection for you.



Features



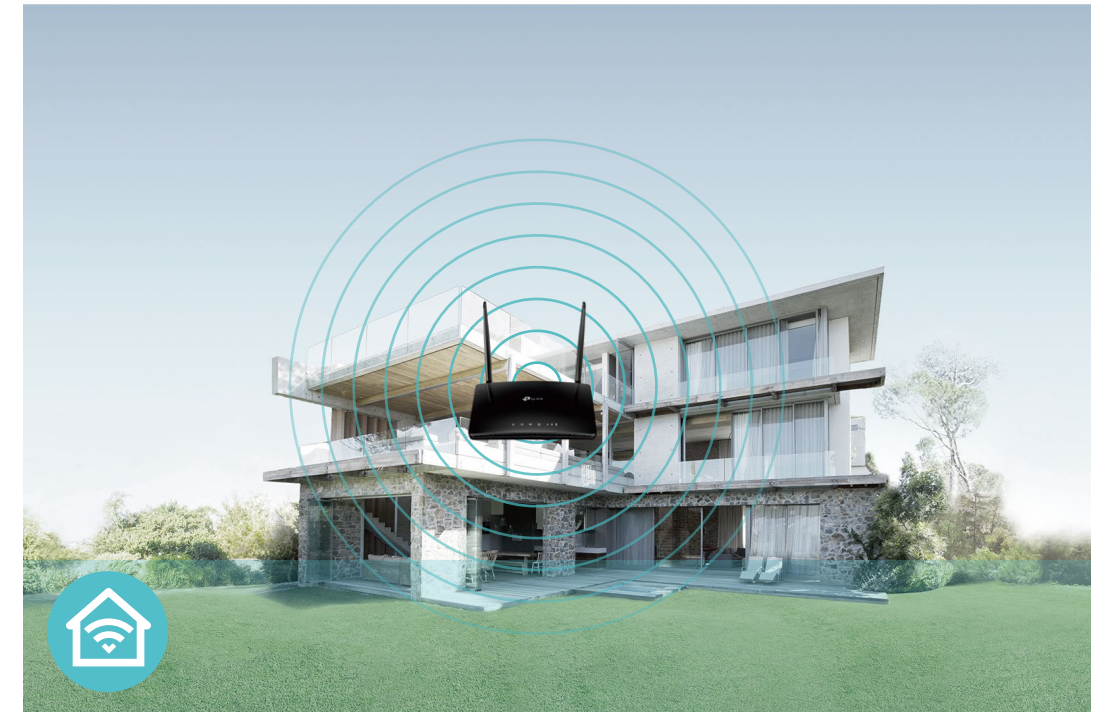
4G LTE

- 4G LTE – Ideal for cutting-edge 4G LTE network
- Backward Compatible – Compatible with 3G network



Wi-Fi Speed

- Superior Wireless Speed – Combined wireless speeds up to 300 Mbps over 2.4 GHz, and 433 Mbps over 5 GHz
- 802.11 ac Standard – Provides a data transfer rate 3 times faster than 802.11n for each stream



Wi-Fi Range

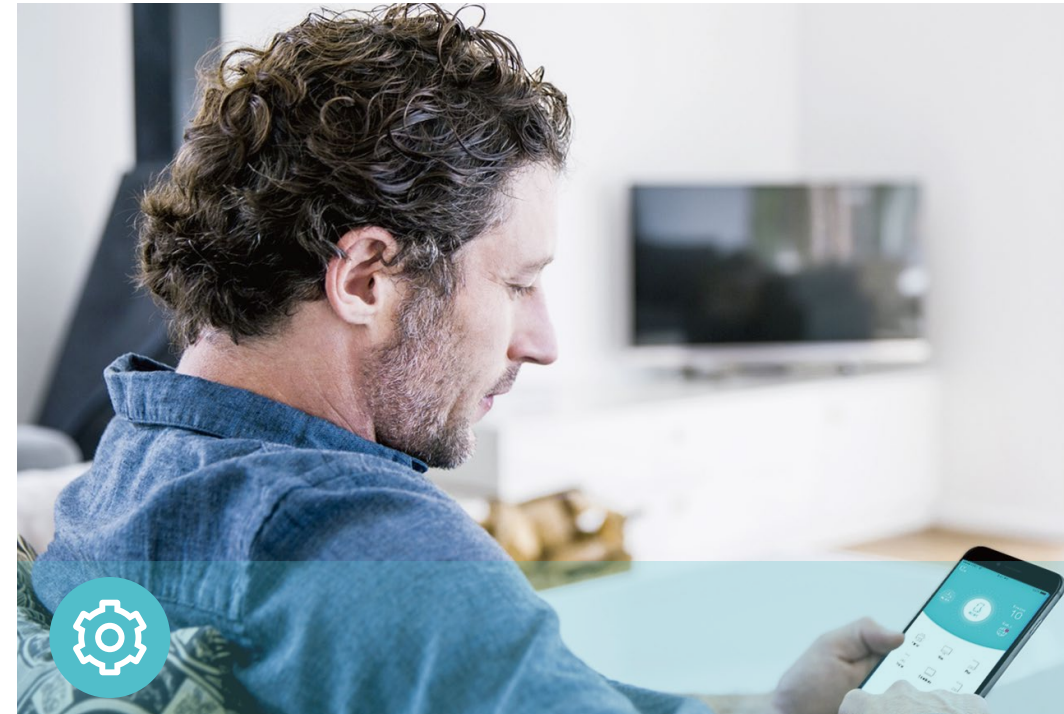
- Great Coverage – Better coverage with integrated Wi-Fi omnidirectional antennas

Features



Reliability

- **Simultaneous Dual Band** – Separate Wi-Fi bands enable more devices to connect to your network without a drop in performance
- **Easy Bandwidth Management** – Advanced QoS makes it easier for you to manage the bandwidth of connected devices
- **Superior Stability** – Powerful processor enables you to connect up to 64 wireless devices with ease



Ease of Use

- **Intuitive Web UI** – Ensures quick and simple installation without hassle
- **Fast Encryption** – One-touch WPA wireless security encryption with the WPS button
- **Wi-Fi On/Off** – Conveniently turn on or off wireless radios as required
- **Hassle-free Management with Tether App** – Network management is made easy with the TP-Link Tether App, available on any Android and iOS device
- **Online Upgrade** – Keeps you informed of the latest firmware and allows online upgrade on the web UI



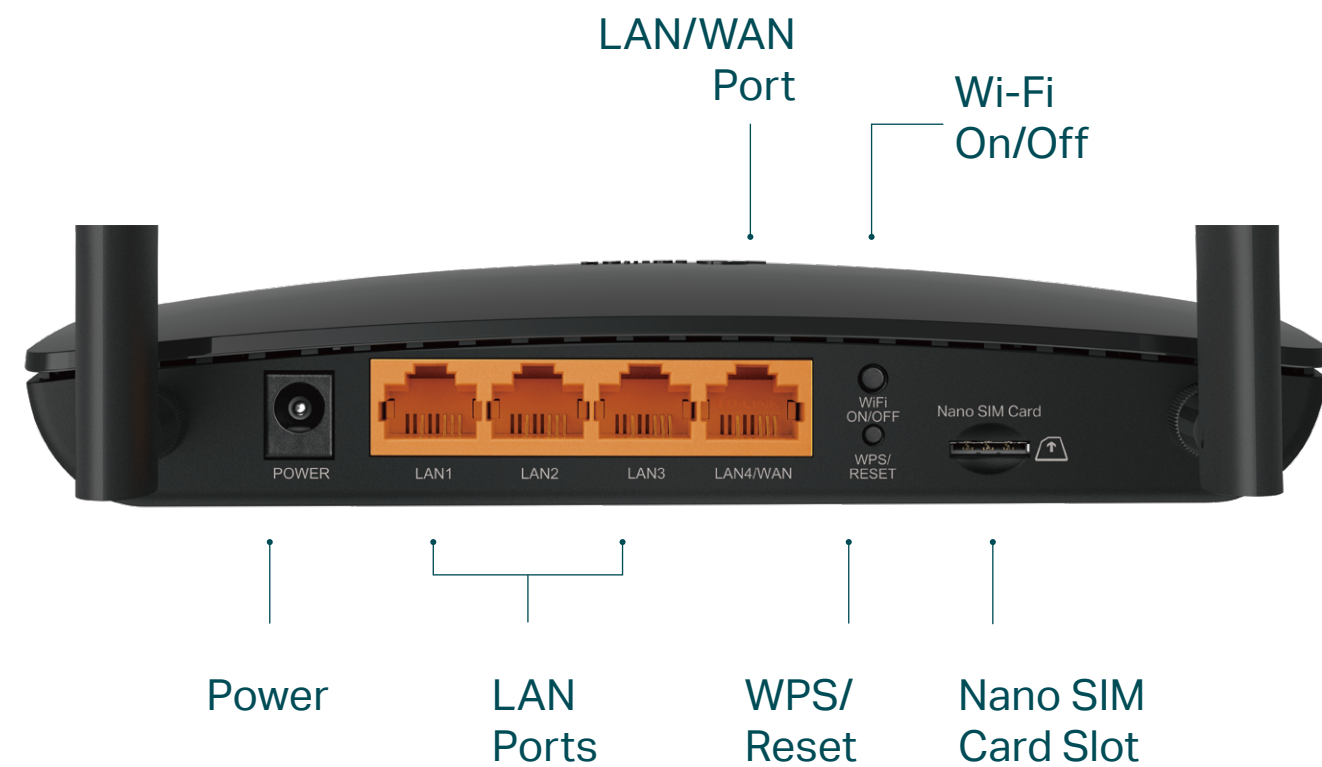
Security

- **Guest Network** – Keeps your main network secure by creating a separate network for friends and visitors
- **Access Control** – Establishes a whitelist or blacklist to allow or restrict certain devices to access the internet
- **Parental Controls** – Restrict internet access time and contents for your children's devices
- **Encryptions for Secure Network** – WPA-PSK and WPA2-PSK encryptions provide active protection against security threats

Specifications

Hardware

- Interface: 3×10/100Mbps LAN Ports, 1×10/100Mbps LAN/WAN Port, 1×Nano SIM Card Slot
- Buttons: WPS/RESET Button, Wi-Fi ON/OFF Button
- Antennas: 2 Detachable External 4G LTE Antennas
- External Power Supply: 12V/1A
- Dimensions (W x D x H): 6.85 × 4.9 × 1.32 in (174 × 124.5 × 33.5 mm)



Wireless

- Network Type
 - 4G: FDD-LTE:B1/B3/B7/B8/B20(2100/1800/2600/900/800 MHz)
 - TDD-LTE: B38/B40/B41(2600/2300/2500 MHz)
 - 3G: DC-HSPA+/HSPA/UMTS:B1/B8(2100/900 MHz)
- Wireless Standards: IEEE 802.11 a/n/ac 5 GHz, IEEE 802.11 b/g/n 2.4 GHz
- Frequency: 2.4 GHz and 5 GHz
- Signal Rate: 300 Mbps at 2.4 GHz, 433 Mbps at 5 GHz
- EIRP (CE): < 20 dBm (2.4 GHz), < 23 dBm (5 GHz)
- Reception Sensitivity:
 - 5 GHz:
 - 11a 54M: -78 dBm
 - 11ac VHT20 MCS0: -92 dBm 11ac VHT20 MCS8: -72 dBm
 - 11ac VHT40 MCS0: -90 dBm 11ac VHT40 MCS9: -67 dBm
 - 11ac VHT80 MCS0: -87 dBm 11ac VHT80 MCS9: -64 dBm
 - 2.4 GHz:
 - 11g 54M: -74 dBm
 - 11n HT20 MCS0: -91 dBm 11n HT20 MCS7: -72 dBm
 - 11n HT40 MCS0: -88 dBm 11n HT40 MCS7: -69 dBm
- Wireless Function: Enable/Disable Wireless Radio, Wireless Schedule, WMM, Wireless Statistics
- Wireless Security: 64/128-bit WEP, WPA/WPA2, WPA-PSK/WPA2-PSK encryptions

Specifications

Software

- Operating Modes: 3G/4G Router, Wireless Router
- WAN Type: Dynamic IP/Static IP/PPPoE/PPTP(Dual Access)/L2TP(Dual Access)
- DHCP: Server, DHCP Client List, Address Reservation
- Quality of Service: Bandwidth Control
- Port Forwarding: Virtual Server, Port Triggering, UPnP, DMZ
- Dynamic DNS: DynDns, NO-IP
- VPN Server: PPTP VPN, OpenVPN
- Firewall Security: DoS, SPI Firewall, IP and MAC Address Binding
- Protocols: IPv4, IPv6
- Management: Access Control, Local Management, Remote Management, reboot schedule
- Guest Network: 2.4 GHz guest network x 1, 5 GHz guest network x 1

Others

- Certification:
CE, RoHS
- Requirements:
Internet Explorer 11+, Firefox 12.0+, Chrome 20.0+, Safari 4.0+, or other JavaScript-enabled browser
Nano SIM Card
- Environment:
Operating Temperature: 0°C~40°C (32°F ~104°F)
Operating Humidity: 10%~90% non-condensing
Storage Humidity: 5%~90% non-condensing
- Package Contents
AC750 Wireless Dual Band 4G LTE Router Archer MR200
RJ45 Ethernet Cable
Power Adapter
Quick Installation Guide



For more information, please visit

https://www.tp-link.com/products/details/?model=Archer+MR200_V6.0

or scan the QR code left

†Maximum wireless signal rates are the physical rates derived from IEEE Standard 802.11 specifications. Actual wireless data throughput and wireless coverage, and quantity of connected devices are not guaranteed and will vary as a result of network conditions, client limitations, and environmental factors, including building materials, obstacles, volume and density of traffic, and client location.
©2023 TP-Link

www.tp-link.com

TP-Link AC750 Wireless Dual Band 4G LTE Router Archer MR200