

Applications

- 2.3GHz-2.4GHz 08dBi ISM Band
- IEEE 802.11X Wireless LAN
- Directional and multipoint applications
- Public Wireless Hotspot
- WiMAX, WiBro
- Wireless Video Systems

Specifications

V.S.W.R	<1.5:1
Return Loss	>14db
Antenna Type	Collinear
Gain	8dBi
Polarization	Vertical
Maximum Power	50W
Vertical Beam-with	15°
Horizontal Beam-with	360°
Impedance	50Ω
Connector	N-Female

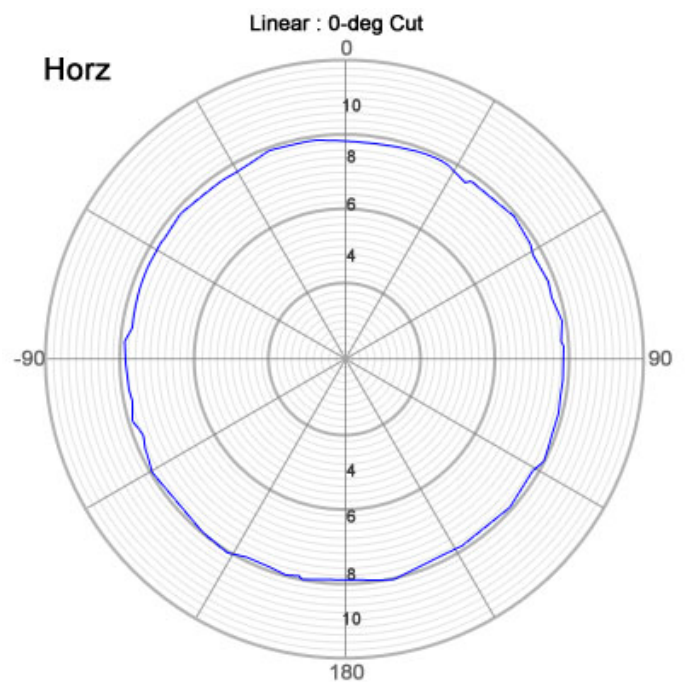
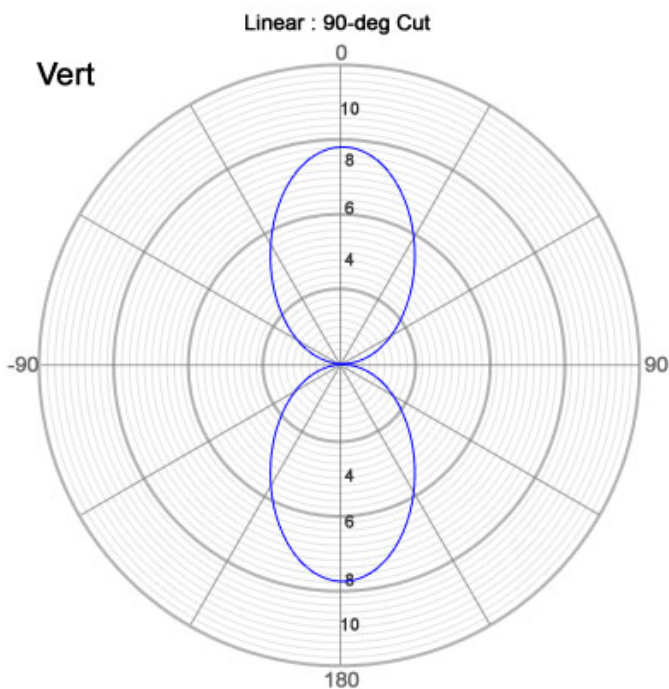
Features

- Superior Performance
- The Weight is light
- Good appearance designs
- Installed for vertical or horizontal polarization
- Outdoor antenna for public Hot spots
- Heavy Duty mounting
- RoHS Compliant

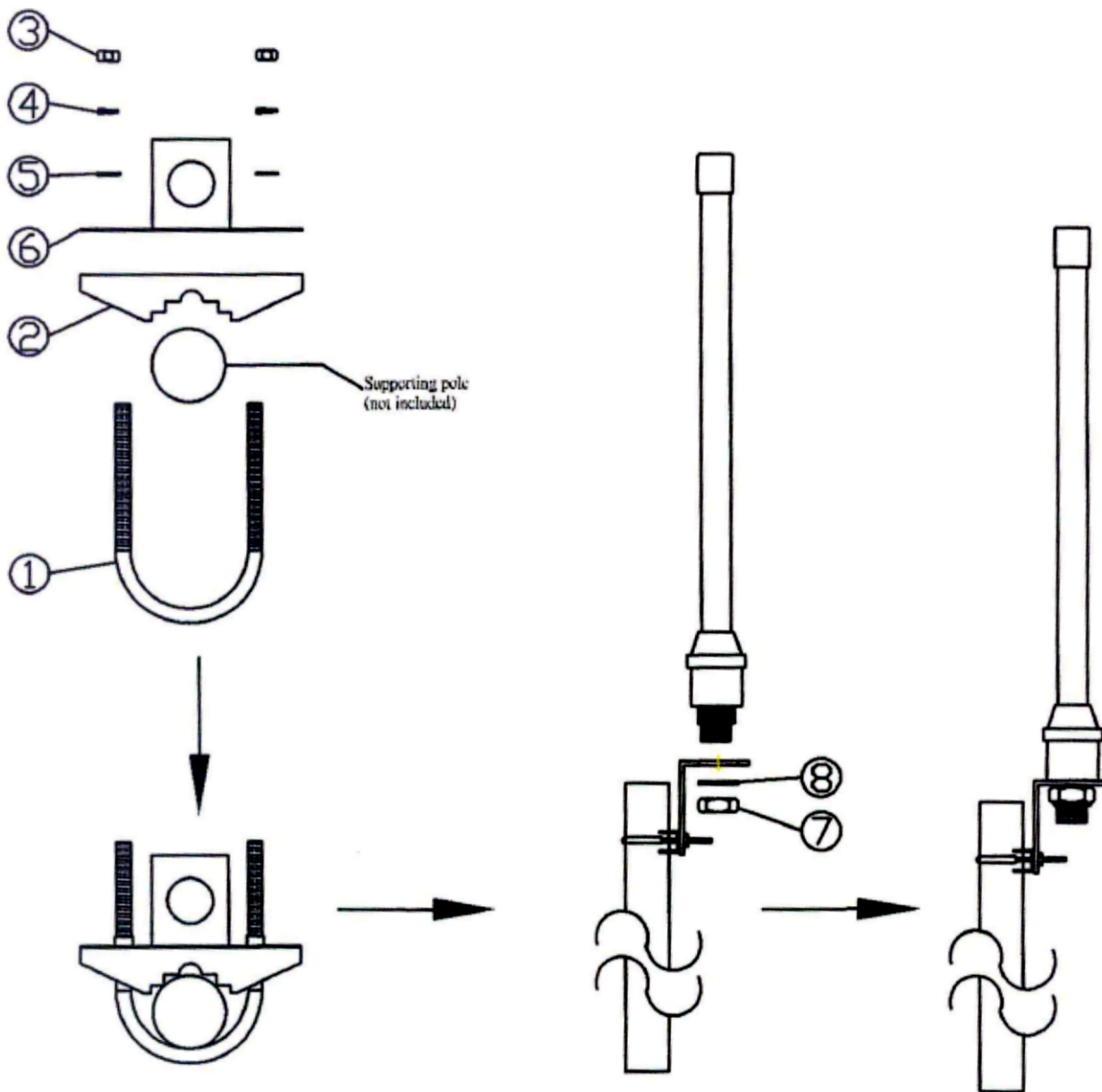
Mechanical

Length	415mm
Diameter	18.8mm
Weight	120g
Wind Survival	>120 MPH
Radome Material	White Fiberglass
Operating Temperature	- 40°C to + 80°C
Clamps	Cable Tie
Mounting	Multiple options
RoHS Compliant	YES

Antenna Polar Plots



Antenna Mounting



Accessories

① * 1 PC

③ * 2 PC

⑤ * 2 PC

⑦ * 1 PC

② * 1 PC

④ * 2 PC

⑥ * 1 PC

⑧ * 1 PC