

ePMP™ 6 GHz Force 4600 Series Subscriber Module

QUICK LOOK:

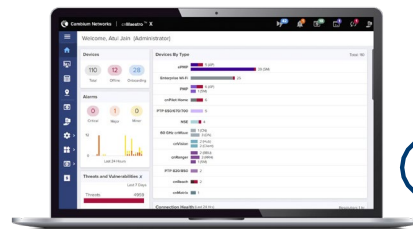
- **Broad selection of high-performance subscriber modules (SM) for point-to-point (PTP) and point-to-multipoint (PMP) fixed wireless broadband applications**
- **Gbps capacity leveraging 160 MHz channels**
- **SM in PMP applications interoperates with ePMP 4600 Access Points (AP)**
- **3-year hardware warranty**



Service providers face ever-increasing demand for capacity in a limited amount of spectrum. The Force 4600 series of subscriber modules meets this demand offering high performance and low latency across both PMP and PTP deployments.

The Force 4600 Series of SMs is available in two form factors: connectorized with 2 x RP-SMA connectors and integrated with a 25 dBi dish antenna. Both models include the following:

- High capacity and latencies less than 5 ms when using ePTP technology
- Interoperability with the ePMP 4600 Series APs
- Force 4600C provides 2 Gbps capacity in PTP applications, meeting the requirements of enterprise, industrial, government, and service provider users
- Management by Cambium Networks cnMaestro™ element management system for easy provisioning, monitoring, and upgrades



- Network planning with LINKPlanner and cnHeat
- 3-year hardware warranty and support from Cambium Networks
- Each SM comes with a Power over Ethernet (PoE) injector and pole mount hardware included

ePMP Force 4600 Series Subscriber Module

Spectrum

Specs in this table apply to all models, except where noted.

Available Models Force 4600C and Force 4625

Channel Width MHz 20 | 40 | 80 | 160 MHz

Proprietary Physical Layer ePMP air interface with 2x2 MIMO/OFDMA

Channel Spacing Configurable in 5 MHz increments

Frequency Range
Force 4600C: 5725–7125 MHz ¹²
Force 4625: 5925–7125 MHz ¹
 1) Allowable frequencies and bands are dictated by individual country regulations. Operation under AFC (Automatic Frequency Coordination) control in FCC jurisdictions
 2) Performance of radio from 5725–5925 MHz is TBD

MAC Layer (Media Access Control) Cambium Proprietary

Ethernet Interface 100/1000 BaseT, rate auto negotiated, 802.3at compliant; 4600C has SFP+ port

Protocols Used IPv4/IPv6, UDP, TCP, IP, ICMP, SNMPv2c, HTTPs, STP, SSH, IGMP Snooping

Network Management HTTP/HTTPS, SNMPv1/2, SNMPv3, SSH

VLAN 802.1Q with 802.1p priority

Performance

| | Force 4600C | Force 4625 |
|---|---|---|
| ARQ | Yes | Yes |
| Nominal Receive Sensitivity (w/FEC) @20 MHz Channel | MCS 0 = -92 dBm to MCS 13 (4096 QAM-5/6) = -53 dBm (per chain) | MCS 0 = -92 dBm to MCS 11 (1024 QAM-5/6) = -61 dBm (per chain) |
| Nominal Receive Sensitivity (w/FEC) @40 MHz Channel | MCS 0 = -89 dBm to MCS 13 (4096 QAM-5/6) = -50 dBm (per chain) | MCS 0 = -89 dBm to MCS 11 (1024 QAM-5/6) = -58 dBm (per chain) |
| Nominal Receive Sensitivity (w/FEC) @80 MHz Channel | MCS 0 = -86 dBm to MCS 13 (4096 QAM-5/6) = -47 dBm (per chain) | MCS 0 = -86 dBm to MCS 11 (1024 QAM-5/6) = -55 dBm (per chain) |
| Nominal Receive Sensitivity (w/FEC) @160 MHz Channel | MCS 0 = -83 dBm to MCS 13 (4096 QAM-5/6) = -44 dBm (per chain) | MCS 0 = -86 dBm to MCS 11 (1024 QAM-5/6) = -51 dBm (per chain) |
| Modulation Levels (Adaptive) | MCS 0 (BPSK) to MCS 13 (4096 QAM-5/6) | MCS 0 (BPSK) to MCS 11 (1024 QAM-5/6) |
| Geolocation | Integrated GPS with antenna puck | External USB GPS receiver |
| Transmit Power Range | +3 to +30 dBm (combined, to regional EIRP limit) (1 dB interval) | +3 to +30 dBm (combined, to regional EIRP limit) (1 dB interval) |
| Quality of Service (QoS) | Three-level priority (Voice, High, Low) with packet classification by DSCP, COS, VLAN ID, IP & MAC Address, Broadcast, Multicast and Station Priority | Three-level priority (Voice, High, Low) with packet classification by DSCP, COS, VLAN ID, IP & MAC Address, Broadcast, Multicast and Station Priority |

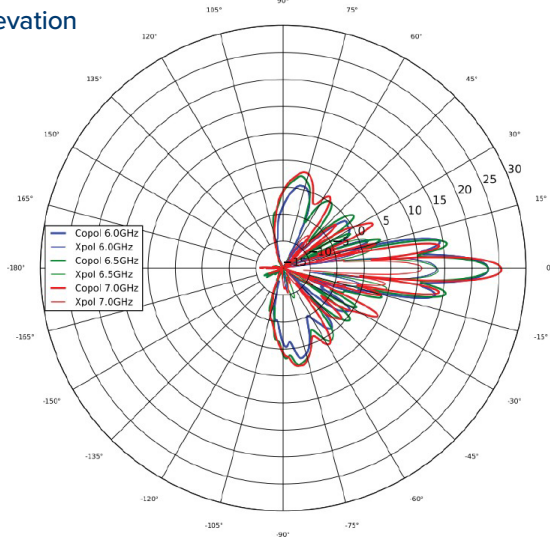
ePMP Force 4600 Series Subscriber Module

| Physical | | |
|---------------------------------|--|--|
| | Force 4600C | Force 4625 |
| Surge Suppression | 1 Joule Integrated | 1 Joule Integrated |
| Environmental | IP67 | IP55 |
| Temperature | -30°C to 55°C (-22°F to 131°F) | -30°C to 55°C (-22°F to 131°F) |
| Weight | 0.73 kg (1.61 lb) without bracket | 2.76 kg (6.1 lb) |
| Dimensions (Dia x Depth) | 256 x 125 x 47 mm (10.1 x 4.9 x 1.9 in) | 472 x 472 x 296 mm (18.5 x 18.5 x 11.7 in) |
| Pole Diameter Range | Center: 3.1 to 7.6 cm (1.25 to 3.0 in) | Center: 3.1 to 7.6 cm (1.25 to 3.0 in) |
| Power Consumption | 28W | 13W (up to 15W in extreme cold temperatures when heater is activated) |
| Input Voltage | 44V–59V | 44V–59V |
| Antenna | External Dish, PN# 2 x 50 ohm, RP SMA (Reverse Polarity) | 25 dBi Integrated Dish |
| GPS Antenna Connection | 1 x 50 ohm, SMA; external GPS; GPS Puck Antenna: Part # N000900L030A | External USB GPS receiver with integrated antenna for regions requiring geolocation; GPS Integrated Receiver: Part # N000940L001A |
| Security | | |
| Encryption | All models: 128-bit AES (CCMP mode), 256-bit AES optional, where allowed | |
| Certifications | | |
| | Force 4600C | Force 4625 |
| FCCID | Z8H89FT0069 | Z8H89FT0075 |
| FCC Regulatory Part # | C068940P151A | C068940P142A |
| ETSI Regulatory Part # | C060940P051A | C060940P041A |
| Industry Canada Cert | 109W-0069 (Certification Pending) | 109W-0075 (Certification Pending) |
| CE | Visit cambiumnetworks.com for declaration of conformity | Visit cambiumnetworks.com for declaration of conformity |

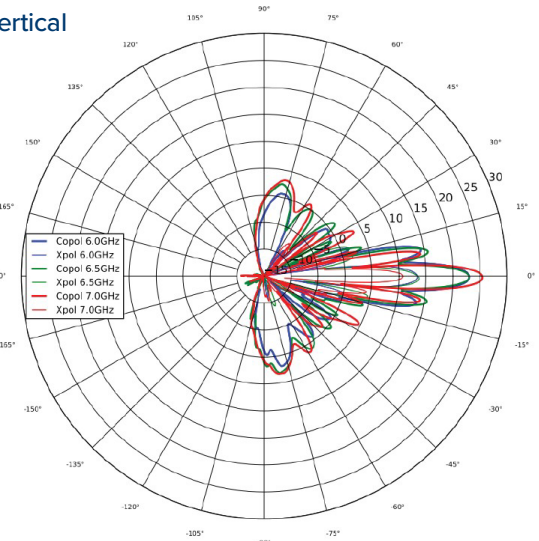
ePMP Force 4600 Series Subscriber Module

Force 4625 Antenna Patterns

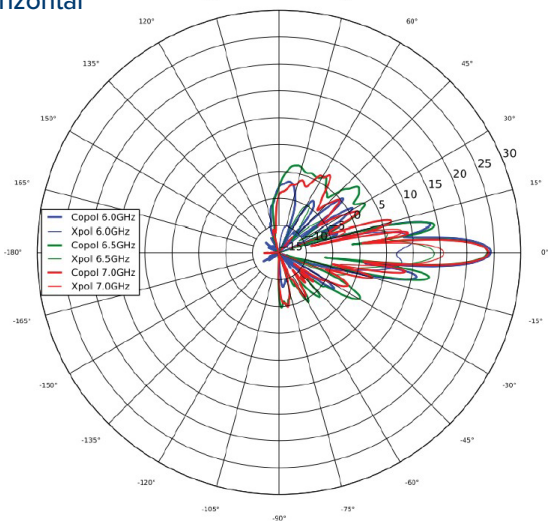
**Azimuth
Elevation**



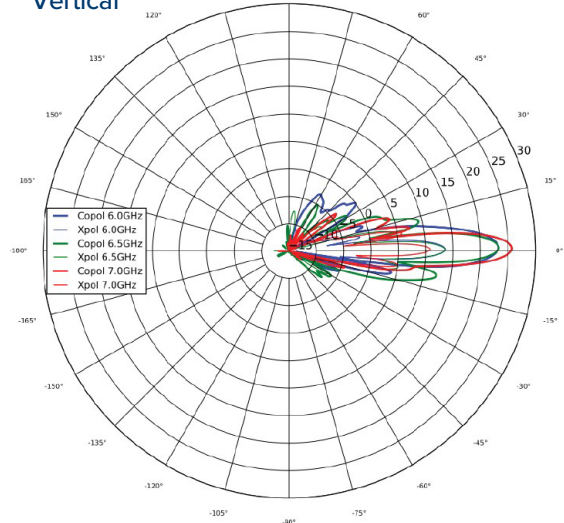
**Azimuth
Vertical**



**Elevation
Horizontal**



**Elevation
Vertical**



ePMP Force 4600 Series Subscriber Module

Force 4600C Ordering Information

| | |
|---------------------|---|
| C060940C021A | ePMP 6 GHz Force 4600C SM Radio (ROW) (no cord) |
| C060940C121A | ePMP 6 GHz Force 4600C SM Radio (ROW) (US cord) |
| C068940C124A | ePMP 6 GHz Force 4600C SM Radio (IC) (Canada/US cord) |
| C060940C221A | ePMP 6 GHz Force 4600C SM Radio (ROW) (EU cord) |
| C060940C223A | ePMP 6 GHz Force 4600C SM Radio (EU) (EU cord) |
| C060940C321A | ePMP 6 GHz Force 4600C SM Radio (ROW) (UK cord) |
| C060940C323A | ePMP 6 GHz Force 4600C SM Radio (EU) (UK cord) |
| C060940C421A | ePMP 6 GHz Force 4600C SM Radio (ROW) (India cord) |
| C060940C425A | ePMP 6 GHz Force 4600C SM Radio (India) (India Cord) |
| C060940C521A | ePMP 6 GHz Force 4600C SM Radio (ROW) (China cord) |
| C060940C621A | ePMP 6 GHz Force 4600C SM Radio (ROW) (Brazil cord) |
| C060940C721A | ePMP 6 GHz Force 4600C SM Radio (ROW) (Argentina cord) |
| C060940C821A | ePMP 6 GHz Force 4600C SM Radio (ROW) (ANZ cord) |
| C060940C921A | ePMP 6 GHz Force 4600C SM Radio (ROW) (South Africa cord) |
| C060940CZ21A | ePMP 6 GHz Force 4600C SM Radio (ROW) (No PSU) |
| C068940C122B | ePMP 6 GHz Force 4600C SM Radio (FCC) (US Cord) |
| C060940C226A | ePMP 6 GHz Force 4600C SM Radio (Indonesia) (EU Cord) |

Force 4625 Ordering Information

| | |
|---------------------|---|
| C060940M041A | ePMP 6 GHz Force 4625 SM Bulk packaging (ROW) (no cord) |
| C060940M141A | ePMP 6 GHz Force 4625 SM Bulk packaging (ROW) (US cord) |
| C068940M144A | ePMP 6 GHz Force 4625 SM Bulk packaging (IC) (Canada/US cord) |
| C060940M241A | ePMP 6 GHz Force 4625 SM Bulk packaging (ROW) (EU cord) |
| C060940M243A | ePMP 6 GHz Force 4625 SM Bulk packaging (EU) (EU cord) |
| C060940M341A | ePMP 6 GHz Force 4625 SM Bulk packaging (ROW) (UK cord) |
| C060940M343A | ePMP 6 GHz Force 4625 SM Bulk packaging (EU) (UK cord) |
| C060940M441A | ePMP 6 GHz Force 4625 SM Bulk packaging (ROW) (India cord) |
| C060940M445A | ePMP 6 GHz Force 4625 SM Bulk packaging (India) (India Cord) |
| C060940M541A | ePMP 6 GHz Force 4625 SM Bulk packaging (ROW) (China cord) |
| C060940M641A | ePMP 6 GHz Force 4625 SM Bulk packaging (ROW) (Brazil cord) |
| C060940M741A | ePMP 6 GHz Force 4625 SM Bulk packaging (ROW) (Argentina cord) |
| C060940M841A | ePMP 6 GHz Force 4625 SM Bulk packaging (ROW) (ANZ cord) |
| C060940M941A | ePMP 6 GHz Force 4625 SM Bulk packaging (ROW) (South Africa cord) |
| C060940MZ41A | ePMP 6 GHz Force 4625 SM Bulk packaging (ROW) (No PSU) |
| C068940M142A | ePMP 6 GHz Force 4625 SM Bulk packaging (FCC) (US Cord) |
| C060940M246A | ePMP 6 GHz Force 4625 SM Bulk packaging (Indonesia) (EU Cord) |

ABOUT CAMBIUM NETWORKS

Cambium Networks empowers millions of people with wireless connectivity worldwide. Its wireless portfolio is used by commercial and government network operators as well as broadband service providers to connect people, places and things. With a single network architecture spanning fixed wireless and Wi-Fi, Cambium Networks enables operators to achieve maximum performance with minimal spectrum. End-to-end cloud management transforms networks into dynamic environments that evolve to meet changing needs with minimal physical human intervention. Cambium Networks empowers a growing ecosystem of partners who design and deliver gigabit wireless solutions that just work.