

DS-2XE6145G0-HS/304**4 MP Explosion-Proof Network Camera**

- Explosion-proof design: the camera has passed international ATEX & IECEx certifications, and can be used in gas and dust hazardous scenarios
- 304 stainless steel enclosure, protecting the camera from damage caused by sparks or corrosive materials
- IP68 water resistant, preventing water ingress for outdoor use
- H.265+/H.265/H.264+/H.264 encoding: efficient compression technology saves storage space and reduces bandwidth requirements
- A built-in heater allows for start-up in ultra-low temperatures to -40 °C
- High resolution 4 MP, capturing clear images

▪ Specification

| Camera | |
|-----------------------------|--|
| Image Sensor | 1/3" Progressive Scan CMOS |
| Max. Resolution | 2688 × 1520 |
| Min. Illumination | Color: 0.003 Lux @ (F1.0, AGC ON) |
| Shutter Time | 1/3 s to 1/100,000 s |
| Angle Adjustment | Pan: 0° to 340°, tilt: 0° to 75° |
| Lens | |
| Lens Type | Fixed focal length, 2.8 mm, 4 mm, and 6 mm optional |
| Focal Length & FOV | 2.8 mm, horizontal FOV 102.5°, vertical FOV 53.4°, diagonal FOV 118.9° 4 mm, horizontal FOV 80.2°, vertical FOV 40.8°, diagonal FOV 93.4° 6 mm, horizontal FOV 52.5°, vertical FOV 27.4°, diagonal FOV 60.2° |
| Lens Mount | M12 |
| Aperture | F1.0 |
| DORI | |
| DORI | 2.8 mm, D: 54.6 m, O: 21.7 m, R: 10.9 m, I: 5.5 m 4 mm, D: 85.4 m, O: 33.9 m, R: 17.1 m, I: 8.5 m 6 mm, D: 128.0 m, O: 50.8 m, R: 25.6 m, I: 12.8 m |
| Video | |
| Main Stream | 50 Hz: 25 fps (2688 × 1520, 1920 × 1080, 1280 × 720) 60 Hz: 30 fps (2688 × 1520, 1920 × 1080, 1280 × 720) |
| Sub-Stream | 50 Hz: 25 fps (640 × 480, 640 × 360) 60 Hz: 30 fps (640 × 480, 640 × 360) |
| Third Stream | 50 Hz: 1 fps (1920 × 1080, 1280 × 720, 640 × 480, 640 × 360) 60 Hz: 1 fps (1920 × 1080, 1280 × 720, 640 × 480, 640 × 360) |
| Video Compression | Main stream: H.265+/H.265/H.264+/H.264 Sub-stream: H.265/H.264/MJPEG Third stream: H.265/H.264 |
| Video Bit Rate | 32 Kbps to 8 Mbps |
| H.264 Type | Baseline Profile/Main Profile/High Profile |
| H.265 Type | Main Profile |
| Scalable Video Coding (SVC) | H.264 and H.265 encoding |
| Region of Interest (ROI) | 5 fixed regions for each stream |
| Target Cropping | Yes |
| Audio | |
| Audio Compression | G.711ulaw/G.711alaw/G.722.1/G.726/MP2L2/PCM/AAC-LC/MP3 |
| Audio Bit Rate | 64 Kbps (G.711 ulaw/G.711 alaw)/16 Kbps (G.722.1)/16 Kbps (G.726)/32 to 192 Kbps (MP2L2)/16 to 64 Kbps (AAC-LC)/8 to 320 Kbps (MP3) |
| Audio Sampling Rate | 8 kHz/16 kHz/32 kHz/44.1 kHz/48 kHz |
| Environment Noise Filtering | Yes |
| Network | |
| Protocols | TCP/IP, ICMP, HTTP, HTTPS, FTP, DHCP, DNS, DDNS, RTP, RTSP, RTCP, PPPoE, NTP, UPnP, SMTP, SNMP, IGMP, 802.1X, QoS, IPv6, UDP, Bonjour |
| Simultaneous Live View | Up to 6 channels |
| API | Open Network Video Interface, ISAPI, ISUP 5.0 |

| | |
|----------------------------------|---|
| User/Host | Up to 32 users 3 levels: administrator, operator and user |
| Network Storage | NAS (NFS, SMB/CIFS), ANR |
| Client | iVMS-4200, Hik-Connect |
| Web Browser | Plug-in required live view: IE10, IE11 Local service: Chrome 57.0+, Firefox 52.0+ |
| Image | |
| Image Parameters Switch | Yes |
| Image Settings | Rotate mode, saturation, brightness, contrast, sharpness, AGC, and white balance adjustable by client software or web browser |
| Day/Night Switch | Day, Night, Auto, Schedule |
| Wide Dynamic Range (WDR) | 120 dB |
| Image Enhancement | BLC, HLC, 3D DNR, defog |
| Interface | |
| Ethernet Interface | 1 RJ45 10 M/100 M self-adaptive Ethernet port |
| On-Board Storage | Built-in memory card slot, support microSD/SDHC/SDXC card, up to 128 GB *You are recommended to purchase memory card together with the product if needed. After ordering, the memory card will be installed to product during manufacturing. |
| Audio | 1 input (line in), 1 output (line out) |
| Alarm | 1 alarm input, 1 alarm output (supports max. 24 VDC, 1 A or 110 VAC, 500 mA) |
| RS-485 | 1 RS-485 interface |
| Event | |
| Basic Event | Motion detection, video tampering alarm, exception (network disconnected, IP address conflict, illegal login, HDD full, HDD error) |
| Smart Event | Line crossing detection, intrusion detection, region entrance detection, region exiting detection Scene change detection, unattended baggage detection, object removal detection |
| General | |
| Power | 12 VDC \pm 20%, 0.8 A, max. 10 W, two-core terminal block PoE: 802.3af, Class 3, 36 V to 57 V, 0.3 A to 0.2 A, max. 12.5 W |
| Material | SUS 304 |
| Dimension | \varnothing 138 mm \times 123.4 mm (\varnothing 5.43" \times 4.86") |
| Package Dimension | 251 mm \times 215 mm \times 189 mm (9.88" \times 8.46" \times 7.44") |
| Weight | Approx. 2810 g (6.2 lb.) |
| With Package Weight | Approx. 4040 g (8.9 lb.) |
| Startup and Operating Conditions | -40 °C to 60 °C (-40 °F to 140 °F). Humidity 95% or less (non-condensing) |
| Language | 33 languages: English, Russian, Estonian, Bulgarian, Hungarian, Greek, German, Italian, Czech, Slovak, French, Polish, Dutch, Portuguese, Spanish, Romanian, Danish, Swedish, Norwegian, Finnish, Croatian, Slovenian, Serbian, Turkish, Korean, Traditional Chinese, Thai, Vietnamese, Japanese, Latvian, Lithuanian, Portuguese (Brazil), Ukrainian |
| General Function | Anti-banding, heartbeat, mirror, privacy mask, password protection, watermark, IP address filter |
| Heater | Yes |

| | |
|----------------------------|--|
| Cable Length | 1.3 m (4.27 ft.) |
| Approval | |
| EMC | FCC: FCC-SDoC (ANSI C63.4, FCC Part15 sub B) CE: CE-EMC (EN 50130-4:2011+A1:2014, EN 55032:2015, EN 61000-3-2:2014, EN 61000-3-3:2013) RCM: AS/NZS 60950.1:2003 + Am1, Am2 and Am3, AS/NZS CISPR 32:2015 IC: IC-VoC (ICES-003 Issue 7:2020) KC: KN 301489-1, KN 301489-17, RRA NOTICE 2017-14 (2017.12.05), RRA NOTICE 2017-19 (2017.12.28) |
| Safety | UL: UL 62368-1: 2014, CAN/CSA C22.2 No. 62368:2014 CB: IEC 62368-1:2014 BIS: IS 13252 (Part 1) 2010+A1:2013+A2:2015 LOA: SANS IEC60950-1 |
| Environment | CE: CE-RoHS (RoHS Directive 2011/65/EU+2015/863) |
| Protection | IP68 (IEC 60529-2013) |
| Explosion-Proof Protection | ATEX: II 2G Ex db IIC T6 Gb/ II 2D Ex tb IIIC T80°C Db IP68 IECEx: Ex db IIC T6 Gb /Ex tb IIIC T80°C Db IP68 For explosive gas atmospheres, the maximum surface temperature is 85°C; For flammable dust atmospheres, the maximum surface temperature is 80°C; IIC: for explosive gas atmospheres other than mines susceptible to firedamp; For explosive gas mixture atmospheres: Zone 1, Zone 2, Zone 21, Zone 22. |

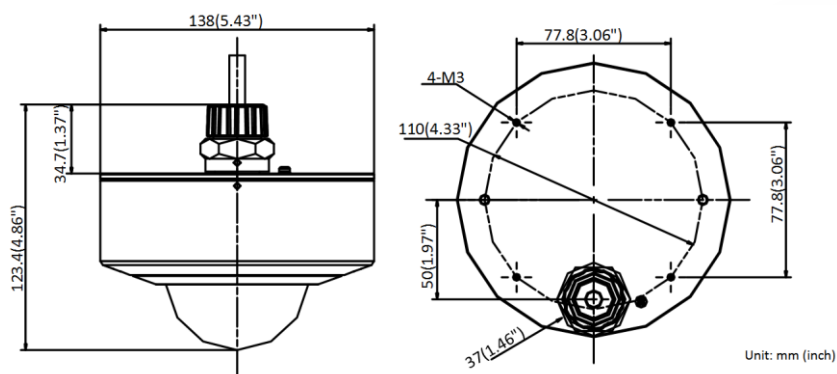
▪ Available Model

DS-2XE6145G0-HS(2.8mm)/304

DS-2XE6145G0-HS(4mm)/304







DS-2XE6145G0-HS(6mm)/304

▪ Dimension



▪ **Accessory**

▪ **Optional**

| <p>DS-2701ZJ-AC(OS) Anti-corrosion Pendant Mount</p> | <p>DS-1697ZJ-X-AC(OS) Anti-corrosion Pendant Mount</p> | <p>DS-1696ZJ-X-AC(OS) Anti-corrosion Pendant Mount</p> | <p>DS-2781ZJ-X(OS)(O-STD) /316L Explosion Proof Junction Box With Built-in Power Adaptor</p> | <p>DS-2780ZJ-X(OS)(O-STD) /316L Junction box</p> |
|--|---|---|---|---|
|  |  |  |  |  |
| <p>DS-2XE2601-1-Y(SS) Explosion Proof Flexible Conduit</p> | | | | |
|  | | | | |

See Far, Go Further



www.hikvision.com
support@hikvision.com

